



# LEARNING 4 LIFE FARM

## 2023 Annual Report



### AUTISM UNEMPLOYMENT RATE



MyDisability

### The Need

- The estimated autism prevalence is 1 in 68 school-aged children.
- As of April 2023, according to the Bureau of Labor Statistics, an estimated 477,000 are considered to be Discouraged Workers
- If the estimated autism prevalence were to also apply to Discouraged Workers, then there would be an estimated 7,010 Discouraged Workers that are autistic.

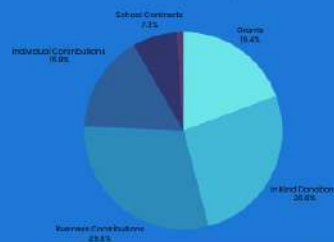
**Our Program  
Seeks To  
Change This.**

### OUR MISSION

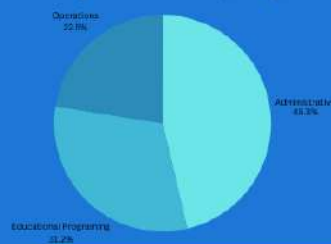
At Learning 4 Life Farm, we are dedicated to empowering neurodivergent young adults through experiential learning and holistic development within a supportive farm setting. Our mission is to create a nurturing environment where the neurodivergent community we serve can thrive, grow, and achieve their fullest potential. We believe in the power of hands-on experiences and a whole-person approach to development, fostering independence, self-confidence, and a sense of belonging

### 2023 Financials

2023 Revenue: \$272,771.23



2023 Expenditures: \$128,216.32



Construction to our barn is completed and our 6 Alpacas have been working with our students since April 2023.

Job training has been in progress throughout the 23/24 school year and has been a wonderful experience for our students and we look forward to continuing student skill building in the upcoming school year.

Learning 4 Life Farm would like to extend a big thank you to all Staff, Students, Parents, Board Members, Volunteers & Community Partners for making 2023 such an amazing year. The students were able to learn new job skills all school year in the hoop houses gardening, learning how to interact with and take care of our Alpacas, gaining experience with our bee hives and so much more.



# LEARNING 4 LIFE FARM